

CommunityView™

Powering Smart Communities

CommunityView™ is a highly visual spatial web application that enables cities to publish relevant city and regional information to the Internet for easy access by their residents. CommunityView™ gives city residents instant access to pertinent city and property data to save both residents and the city time and enhance residents' general knowledge of their community.

CITY of CALABASAS

HOME TABLE OF CONTENTS SEARCH E-MAIL

COUNCIL COMMISSIONS AGENDAS CALENDAR DEPARTMENTS INFORMATION SERVICES CALABASAS A-Z
LINKS FAQ'S PARKS N' REC. LIBRARY WHAT'S NEW CTV JOBS SCHOOL DISTRICT CHAMBER OF COMMERCE

HOME 9:53 am

Search Enter Address or APN here go View Print Help

PARKMOR RD CALABASAS CA 91302
APN :
[Photo](#) | [Summary](#) | [Details](#)
[Clear Subject Property](#)

DIGITAL MAP PRODUCTS
Copyright © 2007 Digital Map Products

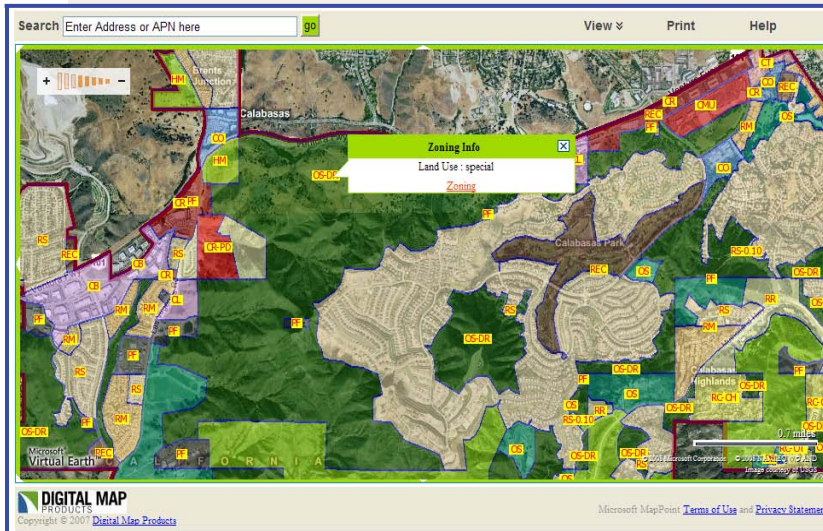
Microsoft MapPoint Terms of Use and Privacy Statement

With CommunityView™, residents can view high resolution aerial imagery and map layers showing a wide range of useful information such as property lines, property information, zoning, city services, city amenities, local attractions, and much more.

From the intuitive map interface, residents can quickly search for properties, zoom and pan around the map, view property details and city specific layers, and print maps and property details.

continued on back...

Enables Constituent Self-Service



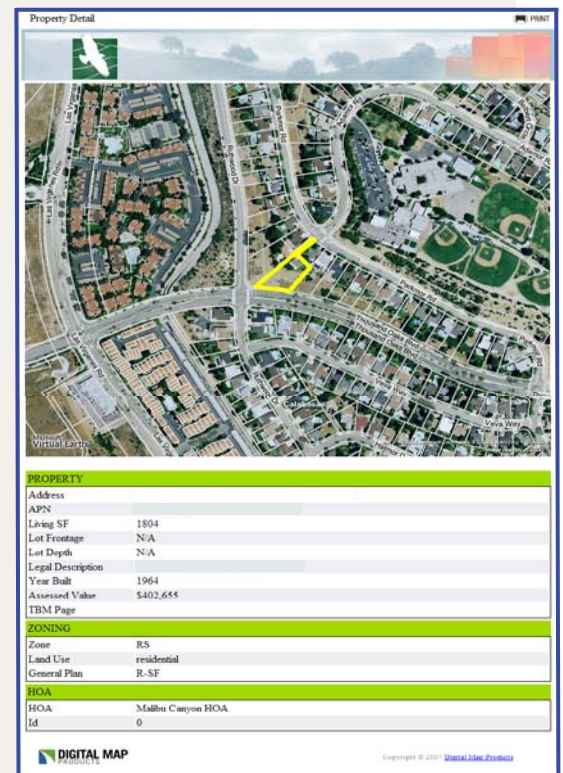
CommunityView™ is a key component to any e-government initiative as it allows residents to self-service, saving cities both time and money. Real-time, 24x7 information availability also delivers a higher level of constituent services.

- capitalizes on growing public spatial data awareness
- saves cities time and money
- leverages existing investment in CityGIS™

Easy to Use and Maintain

Built on the widely popular Microsoft® Virtual Earth™ platform, CommunityView™ lets city residents research their questions and retrieve neighborhood information from an easy-to-use, familiar interface. Plus, CommunityView™ couldn't be easier for cities to keep current with the ability to maintain layers directly from CityGIS™. Layers published to CommunityView™ are available immediately and cities control what information is made public.

- highly visual, familiar and intuitive interface
- Internet based with nothing to install
- no hardware for cities to maintain
- easy creation and maintenance of CommunityView™ layers using CityGIS™



For more information visit

www.digitalmapproducts.com/products/communityview.htm