



# CodeEnforcement for CityGIS™

## The Digital Map Advantage

### Deliver GIS Today

- No hardware or software installation required – start using it right away
- Updates to the software and data without impact to your resources
- Parcel, street, hazard data and aerial photography are standard

### Cost-effective alternative to traditional GIS

- Less expensive than building your own GIS system
- Total outsourced solution
- CityGIS™ can pay for itself – ask us how!

### Roof-top geo-coding

### Easily add your own data

### Manage & edit your spatial data

### Serve constituents better than ever before

### Access anywhere, anytime 24 X 7

## Better Communities Through Improved Enforcement

CodeEnforcement enhances community code work by leveraging the power of maps and data in an easy-to-use online application.

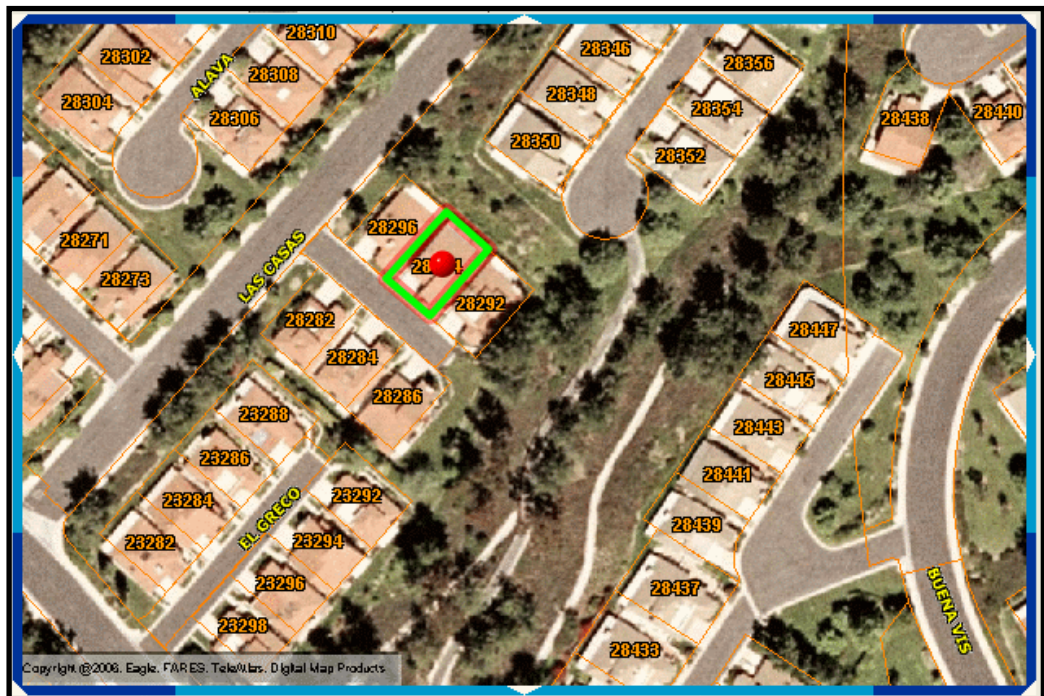
Enforcing municipal codes is a vital part of creating a healthy, safe, and vibrant place to live. Effective code management leads to higher property values, lower crime, and safer neighborhoods. Digital Map Products' CodeEnforcement module for CityGIS™ enables local governments to more efficiently manage the work involved in code oversight and enforcement.

### CodeEnforcement Benefits

Valuable map perspective – Maps add a valuable geographic perspective to code enforcement activity. Easily display the location of code violations, proximity to neighborhoods, landmarks, and environmental hazard areas; maps reveal patterns in neighborhoods to more efficiently schedule site visits and follow-up.

Easier case tracking – Log and access case information from one convenient interface. Internet access to case information gives multiple departments and staff access to the same information.

CityGIS™ – Cases can be viewed in CityGIS™ as property details; code case histories are pulled from CodeEnforcement, facilitating action and simplifying decision-making.



Simply click on the property to initiate a case

- The accurate address information is automatically populated
- View the property and parcel boundaries quickly – see clusters of cases

# Better & More Accurate Case Management with Maps

Digital Map is the pioneer in integrating data with aerial maps and property information on a single, easy to use, map interface for advanced decision-making.

Regular data updates ensure that Digital Map customers receive access to the highest quality data.

CityGIS™ has minimal overhead, rapid deployment, ease-of-use, and high performance all for a fraction of the cost of traditional GIS solutions.

## CodeEnforcement Features and Functionality

**Browser-based access** – All you need are Internet Explorer and an Internet connection.

**Easy case management** – Case details are entered, saved, and retrieved through convenient data entry screens; case information can include property information, address, APN, GPS location information, and photographs of violations.

**Maintain Historical Data** - A code history database can be converted and added to CodeEnforcement.

**Integrated mapping** – Maps are displayed adjacent to case details and can include aerial photographs, parcel boundaries, zoning information, hazard areas, and custom map layers.

**Reporting** – Generate caseload and summary reports based on parameters such as date ranges and assigned enforcement officers; reports include case details, photos of violations, and overview maps highlighting case locations.

**Administrative control** – Managers can edit multiple data entry lists, including code enforcement officers, types of code violations, case status, steps for case management, and sources of code violation information.

Case: 2005-1	
Case number	1001-5
Status	Open
Description	Building without a permit
Case Officer	J. Smith
APN	011- 1111-111-1
Owner	Doe, John
Contact	Doe, Jane
Date	2006 - 01 - 01
Address	123 1st Ave Anytown, USA
<a href="#">Add new Violation</a>	
<input checked="" type="checkbox"/>	Violation: 2005-1 / Inoperative vehicle
<input checked="" type="checkbox"/>	Violation: 2005-1 / Outdoor display

Attach documents & photos with ease

Simply click on map to add accurate address information to each case

Easily add new violations & view all violations attached to an address

## Now with the Power of CityGIS™

- Simply click on a parcel to fill-in case information quickly and accurately
- View a property with our integrated Aerial Photography
- Easily customize through Maintenance Manager

## Start Today – Learn How

Simply call us at **1.888.322.6277 Ext. 1** or email us at [sales@digmap.com](mailto:sales@digmap.com).

Digital Map Products  
575 Anton Blvd.  
Suite 750  
Costa Mesa, CA 92626

[www.digmap.com](http://www.digmap.com)

(714) 432-7637