

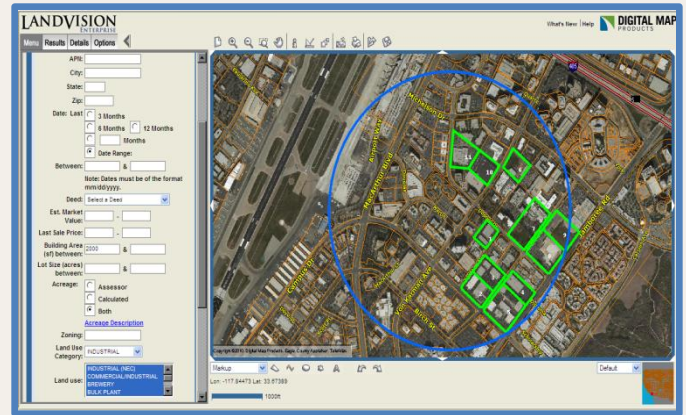
# LANDVISION™

## Real Estate Research & Analysis with a Spatial Perspective

Because real estate is all about location, it's important to perform your research, analysis and decision making from a spatial perspective. LandVision™, a popular map-based research, analysis and collaboration tool from Digital Map Products, incorporates location visualization to help you find better deals.

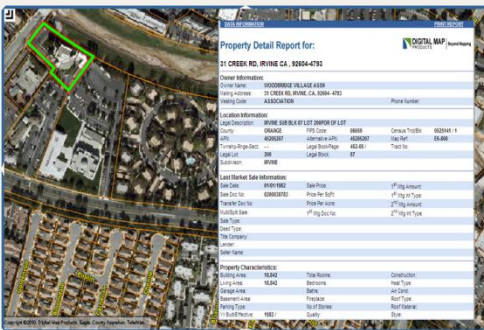
LandVision™ provides access to comprehensive property and geospatial data, powerful visual analysis capabilities, and collaboration features, all in an intuitive online tool. It is a single source solution for builders, developers and commercial brokers to research, analyze and manage real estate projects. Users of LandVision™ find new opportunities ahead of the competition, qualify them quickly and efficiently manage their property portfolios.

LandVision™ is available in two editions: Professional and Enterprise, which makes the benefits of spatially-enabled decision making available to companies of all sizes.



LandVision™ provides a single source solution to research, analyze and manage projects from a map interface.

### LandVision™ Professional



LandVision™ Professional is best suited for small to medium-sized firms with a limited number of users. It offers comprehensive property, market and environmental data, aerial imagery, drawing tools, and advanced spatial search features. The easy-to-use map-based interface makes using advanced mapping technology simple, letting you find better land and lots. LandVision™ Professional offers an affordable and scalable solution to bring location context to your research, analysis and decision making.

### LandVision™ Enterprise



LandVision™ Enterprise is ideally suited for medium to large-sized regional and national builders, developers and commercial brokerages with numerous users and a need to share data. It offers a robust mapping solution for advanced searching, powerful visual analysis and enterprise-wide collaboration. Premium data layers, collaboration features and the ability to import custom data distinguish this versatile single source solution. LandVision™ Enterprise users save time and capitalize on more valuable opportunities.

Leading builders, developers and commercial brokerages rely on LandVision™ to accelerate their decision making. Give your research and analysis a competitive edge by spatially-enabling it with LandVision™.

continued on back →

# LANDVISION™

LandVision™ is available in two editions: **Professional** and **Enterprise**. The two editions make LandVision™ more accessible, so builders, developers and commercial brokers, regardless of size, can leverage location perspective throughout their real estate tasks and decisions. Features and descriptions of both editions are listed in the table below.

Feature	Description	Professional	Enterprise
Property & Transaction Data	Property record, ownership info. & 10 year transaction history joined to parcel boundary data. Updated weekly.	✓	✓
Parcel Boundary Data	Polyline layer of property boundaries sourced from county governments.	✓	✓
Aerial Imagery	Standard layer of high resolution aerial imagery.*	✓	✓
Environmental Data	FEMA flood, USGS wetlands, brownfields, & regional data.*	✓	✓
Terrain	Contours & USGS topographic maps (7.5-minute quadrangles).	✓	✓
Oblique Imagery	Microsoft's Bing Maps bird's eye imagery (angled, aerial imagery).	✓	✓
Property Search	Search by sale date, price, owner name, size, APN, & land use.	✓	✓
Location Search	Search by city, state, zip, address, street intersection, & lat/long.	✓	✓
Advanced Search	Build custom searches with multiple conditions.	✓	✓
Spatial Search	Search by radius, selected area, buffer, or user-drawn shape.	✓	✓
Measure Tools	Perform measurements of map features.	✓	✓
Drawing Tools	Draw shapes & lines, place symbols, add labels, & format drawn objects.	✓	✓
Image Overlay	Overlay images on the map (e.g. plans), modify size & transparency.	✓	✓
Link to Google Earth	Automatically open Google Earth & navigate to LandVision™ location.	✓	✓
Mailing Lists	Export search results to Microsoft Word to create mailing labels.	✓	✓
Export Data	Export property records & customer data to spreadsheet or shapefile.	✓	✓
Print & Email Maps	Print & email maps & search results. Option to print to image files & pdf.	✓	✓
Enhanced Imagery	Premium aerial imagery to augment the base imagery available. Choice of providers, currency, & resolution.	\$	✓
Tax Maps	Assessor's parcel (Assessor plat) maps.*	\$	✓
Retail (POI) Layer	Ability to display & search for restaurants, big box stores & retailers.	\$	✓
Premium Data	Customer or third party data available in LandVision™ with search forms.	\$	✓
Project Management	Create & save your own spatial databases. Tailored data capture & search forms designed for developers, builders & brokers.		✓
Import Data	Import spreadsheet data (address or coordinate) & spatial data (.shp).		✓
Data Styling Tools	Thematically display user-loaded data for advanced analysis.		✓
Custom Data Search	Custom search forms designed for proprietary customer-supplied data.		✓
Large Format Print	Print map images with higher resolution, up to 34 x 42 inches.		✓
Attach Documents	Attach documents to spatial features like parcel & user defined areas.		✓
Dynamic Data Notes	Attach a "digital Post-It" to a parcel or user created project.		✓
Save & Open Maps	Save & retrieve maps with drawings, labels & search results.		✓
Parcel Edit Override	Override tax assessor data to correct errors or capture real-time updates.		✓
Reports	Easy to understand reports for advanced analysis.		✓

\*Availability varies by market    ✓ = Included in base user license    \$ = Additional fee applies

For more information visit:  
[www.digmap.com/products/landvision/](http://www.digmap.com/products/landvision/)